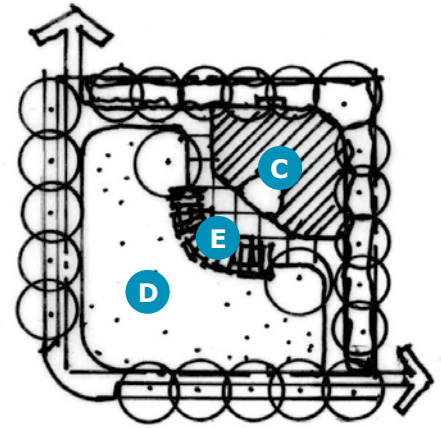


Prototype: one-acre park



Prototype: half acre park

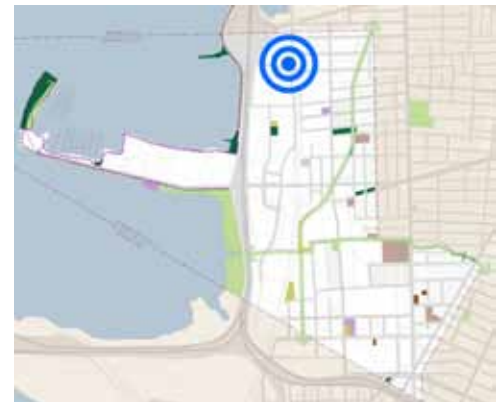
## SITE B

### DESCRIPTION

This other park opportunity is identified in the General Plan to provide access to basic park activities for those living, working and going to school in the northwest corner of the city. This area is also relatively close to Aquatic Park, located across the city limit in Berkeley.

### SITE RECOMMENDATIONS

- The focus of this site should be basics that are not served by Aquatic Park.
- With no specific site identified, it is unclear how much property may be available when the opportunity arises. To accommodate the basic recommended park program, approximately one half acre of land should be a minimum. To add in two or three of the potential program elements an additional half acre would be ideal.
- Gardening could be supported on this small site by designing in landscape plantings (a) that can be adopted by volunteer gardeners. These plantings could include edible landscape plants such as berry bushes. Alternately, this area could be used for game courts.
- Sports on this size of a site should be provided in the form of courts such as half basketball courts (b).
- A children's play area (c) should include nature play, manufactured play equipment or interactive art and be flanked by multi-use turf or other surface (d) and seating areas (e).
- The facilities provided on this site should be selected based on what has been provided nearby at Site C.



#### Recommended Park Program

Play for Children  
Socializing, Relaxing  
Picnicking/Lunch  
Respite and Solitude  
Games

#### Potential Program Elements

Sports  
Gardening  
Exercise and Fitness  
Viewing Art