

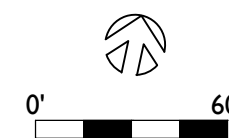
- LEGEND:**
- TRANSIT PASSENGER AREA  
INCLUDES SPACE FOR BUS SHELTER, TRASH RECEPTACLE, SEATING AND RAILING
  - TWO-WAY CLASS IV BIKEWAY  
GREEN INFRASTRUCTURE OPPORTUNITY:  
CONSTRUCT BIKEWAY USING PERMEABLE ASPHALT
  - RECONSTRUCTED SIDEWALK  
INCLUDES RELOCATING FIRE HYDRANT, TRAFFIC POLES, STREET LIGHTS AND OTHER UTILITIES, AS NECESSARY
  - EXISTING LANDSCAPE
  - NEW LANDSCAPE/GI OPPORTUNITIES
  - NEW STREET TREE
  - PEDESTRIAN-SCALE LIGHT FIXTURE

# 40th and San Pablo Bus Hub Project

## Extended 40th Street Multimodal Concept Design - Adeline Street to IKEA Entry

### ACTIVE TRANSPORTATION IMPROVEMENTS - LAYOUT PLAN

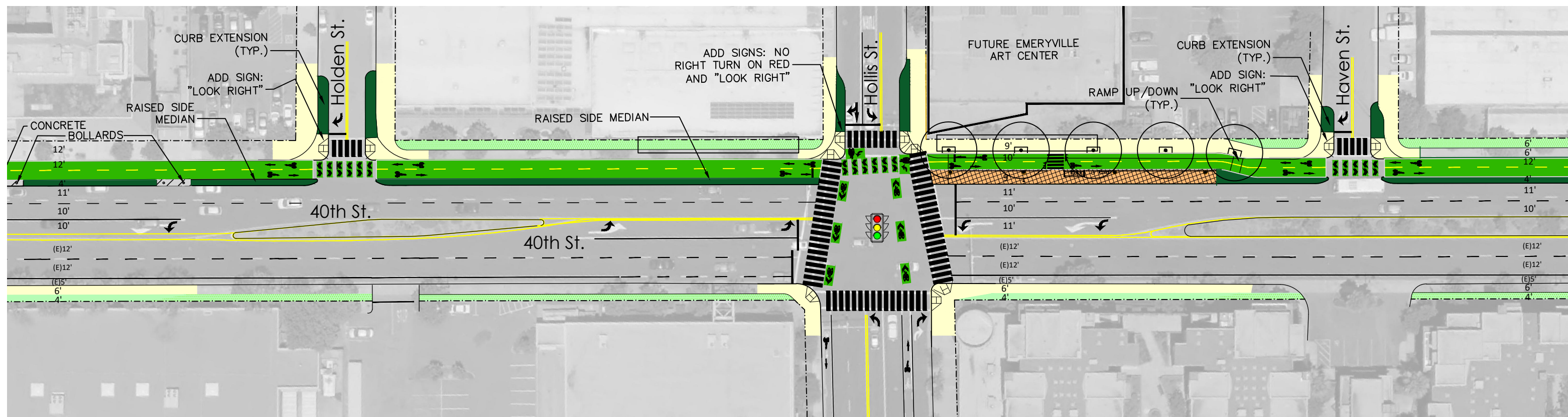
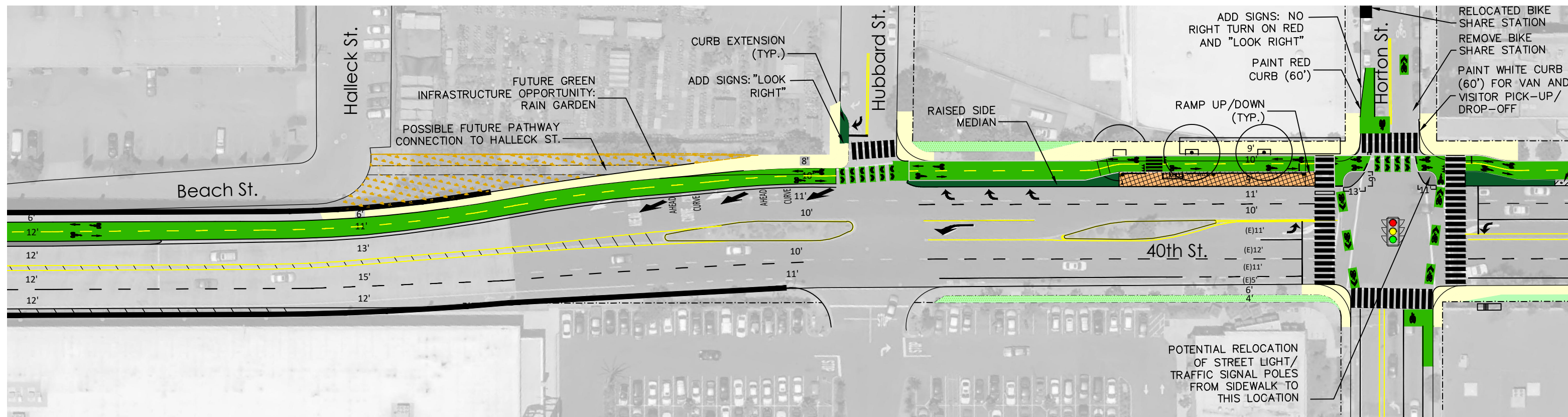
### Attachment 1



SCALE: 1" = 60'  
DATE: 6/4/2020

SHEET-01



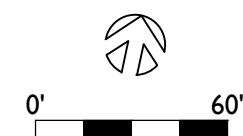


- LEGEND:**
- TRANSIT PASSENGER AREA  
INCLUDES SPACE FOR BUS SHELTER, TRASH RECEPTACLE, SEATING AND RAILING
  - TWO-WAY CLASS IV BIKEWAY  
GREEN INFRASTRUCTURE OPPORTUNITY: CONSTRUCT BIKEWAY USING PERMEABLE ASPHALT
  - RECONSTRUCTED SIDEWALK  
INCLUDES RELOCATING FIRE HYDRANT, TRAFFIC POLES, STREET LIGHTS AND OTHER UTILITIES, AS NECESSARY
  - EXISTING LANDSCAPE
  - NEW LANDSCAPE/ GI OPPORTUNITIES
  - NEW STREET TREE
  - PEDESTRIAN-SCALE LIGHT FIXTURE

# 40th and San Pablo Bus Hub Project

## Extended 40th Street Multimodal Concept Design - Adeline Street to IKEA Entry

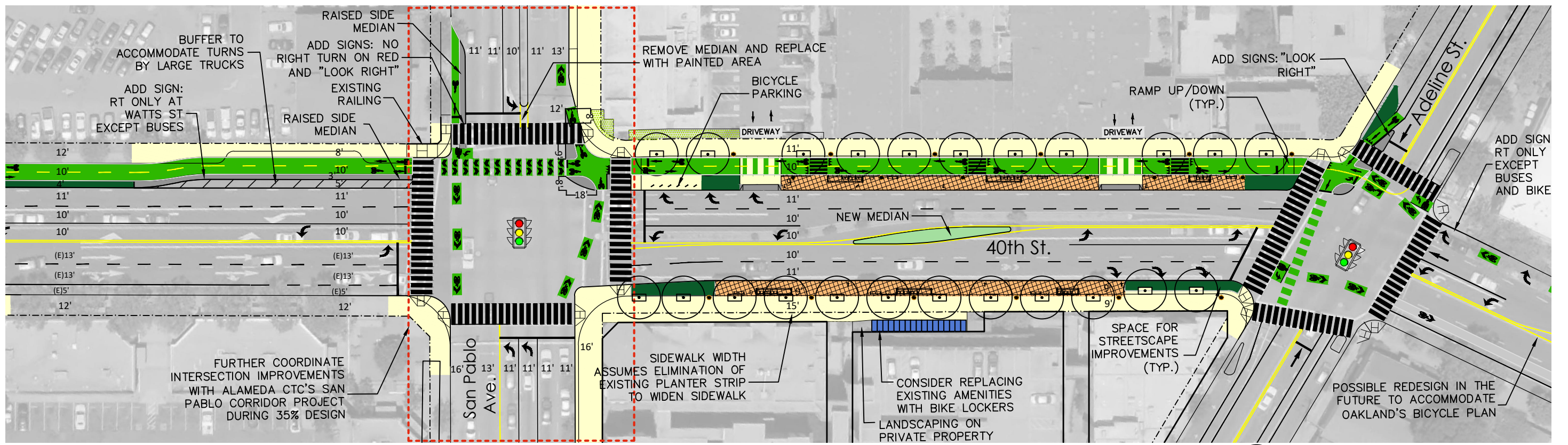
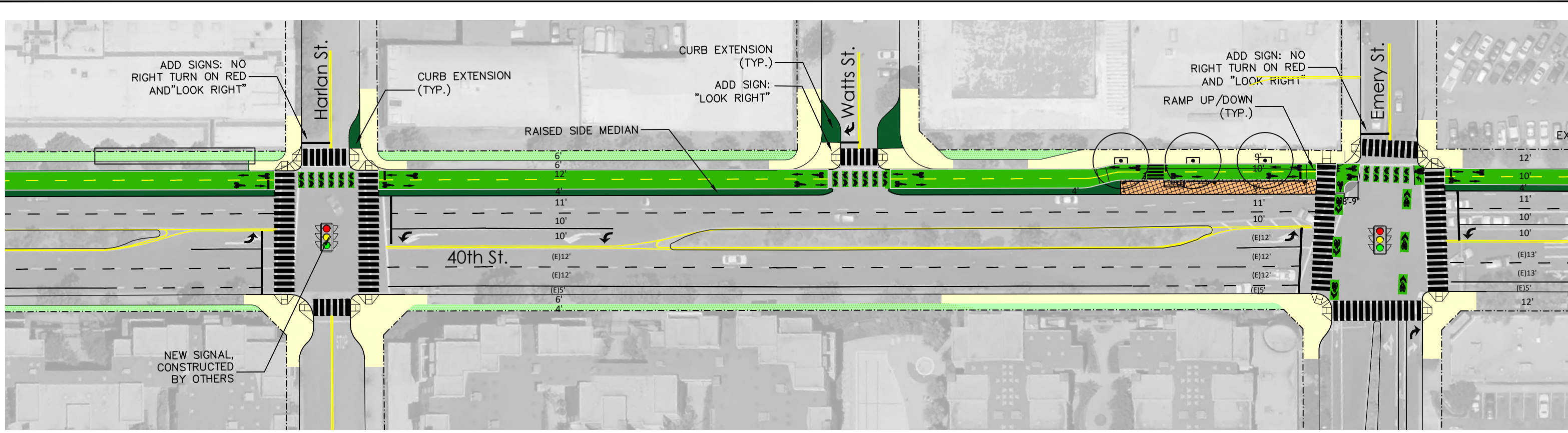
### LAYOUT PLAN



SCALE: 1" = 60'  
DATE: 6/4/2020

**SHEET-02**





- LEGEND:**
- TRANSIT PASSENGER AREA  
INCLUDES SPACE FOR BUS SHELTER, TRASH RECEPTACLE, SEATING AND RAILING
  - TWO-WAY CLASS IV BIKEWAY  
GREEN INFRASTRUCTURE OPPORTUNITY: CONSTRUCT BIKEWAY USING PERMEABLE ASPHALT
  - RECONSTRUCTED SIDEWALK  
INCLUDES RELOCATING FIRE HYDRANT, TRAFFIC POLES, STREET LIGHTS AND OTHER UTILITIES, AS NECESSARY
  - EXISTING LANDSCAPE
  - NEW LANDSCAPE/GI OPPORTUNITIES
  - NEW STREET TREE
  - PEDESTRIAN-SCALE LIGHT FIXTURE

# 40th and San Pablo Bus Hub Project

## Extended 40th Street Multimodal Concept Design - Adeline Street to IKEA Entry

LAYOUT PLAN

SCALE: 1" = 60'

DATE: 6/4/2020

SHEET-03