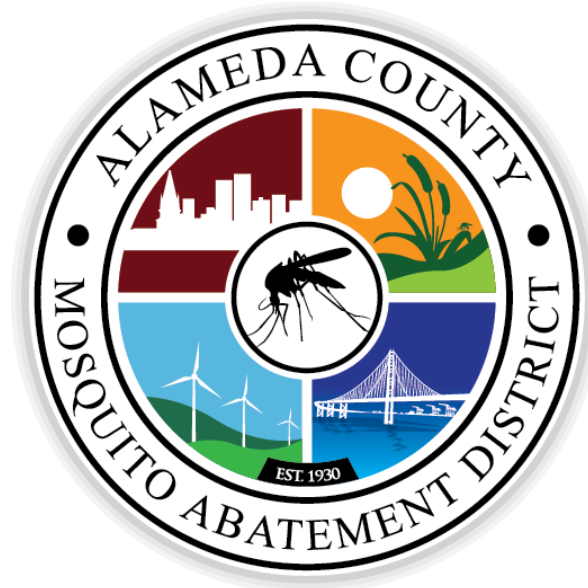


# Modern Mosquito Control Challenges and Opportunities

An Independent Special District  
Protecting Public Health since 1930



City of Emeryville: 2/5/19



# Hello Emeryville.

- Our District
- Mosquitoes
- Health Threats
- Control
- Innovations
- Partners



# Our Board of Trustees

**Eric Hentschke, President, City of Newark**

**Wendi Poulson, Vice-President, City of Alameda**

**P. Robert Beatty, Secretary, City of Berkeley**

Alan Brown, City of Dublin

Betsy Cooley, City of Emeryville

George Young, City of Fremont

Elisa Marquez, City of Hayward

James N. Doggett, City of Livermore

Jan O. Washburn, City of Oakland

Robert Dickinson, City of Piedmont

Kathy Narum, City of Pleasanton

Ed Hernandez, City of San Leandro

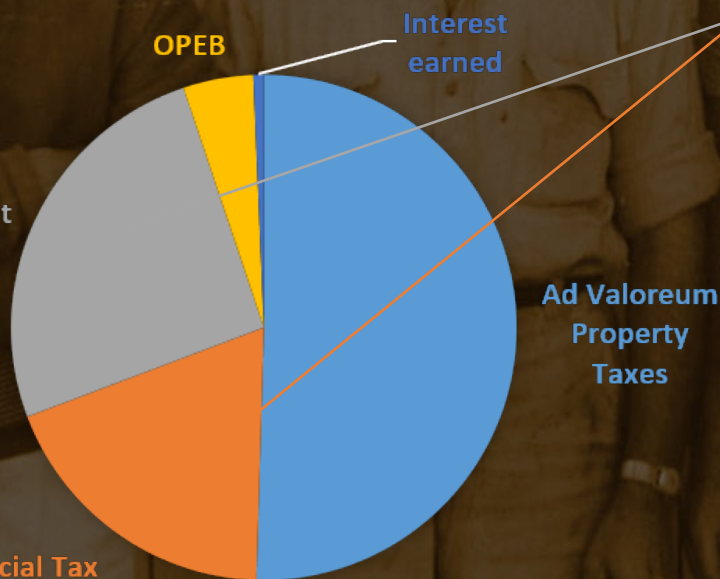
Subru Bhat, City of Union City

County-at-Large, vacant





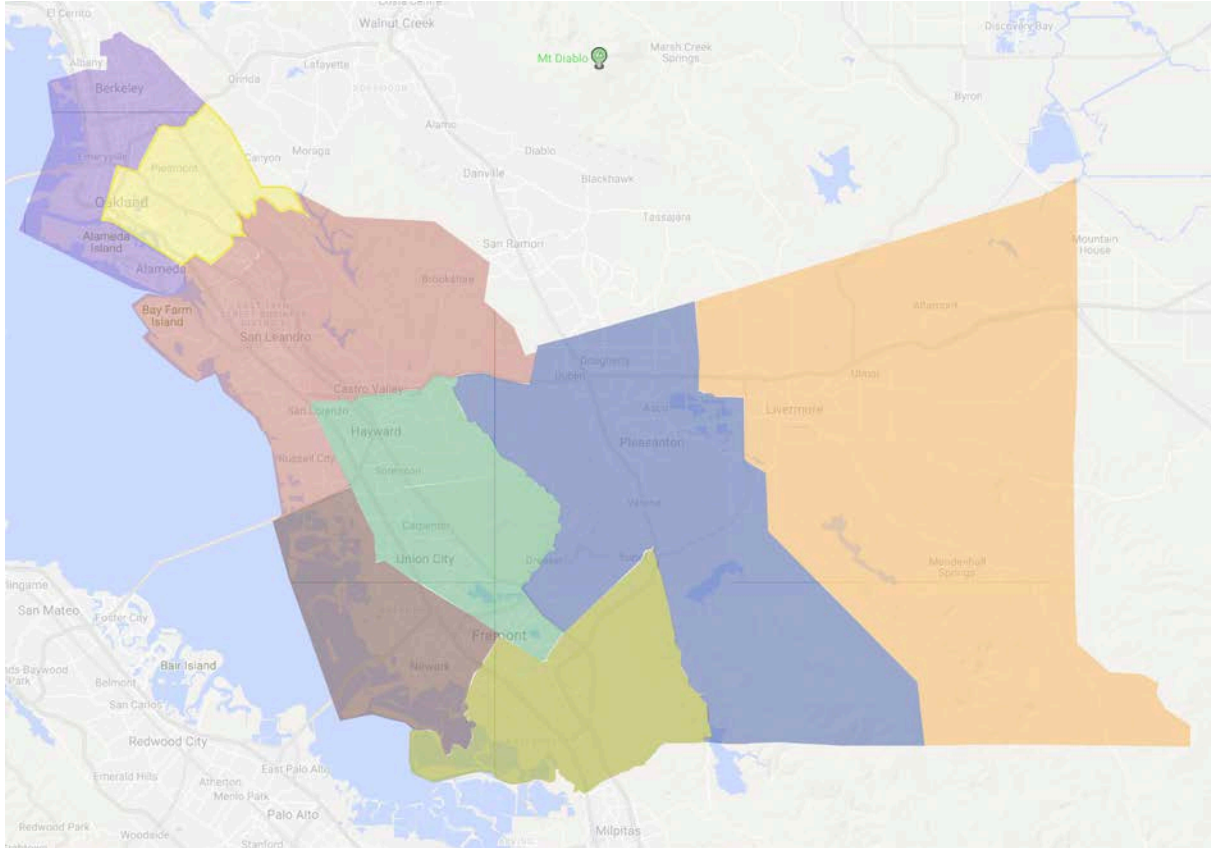
Fixed Charges and/or Special Assessments		
Description	Phone	Amount
CITY SEWER SERVICE	800-676-7516	313.80
MOSQUITO ABATEMENT	800-273-5167	1.74
CSA PARAMEDIC	800-441-8280	32.86
CSA VECTOR CONTROL	800-273-5167	5.92
HEALTHCARE DIST	800-273-5167	298.00
CSA LEAD ABATEMENT	510-567-8280	10.00
* SCHOOL MEASURE B1	844-332-0549	683.20
PERALTA CCD MEAS B	800-792-8021	48.00
SFBRA MEASURE AA	888-508-8157	12.00
HAZ WASTE PROGRAM	800-273-5167	7.40
CSA VECTOR CNTRL B	800-273-5167	4.08
MOSQUITO ASSESS 2	800-273-5167	2.50
AC TRANSIT MEAS VV	800-273-5167	96.00
EBMUD WETWEATHER	866-403-2683	103.74
* EAST BAY TRAIL LLD	888-512-0316	5.44
* EBRP PARK SAFETY/M	888-512-0316	12.00
URBAN RUNOFF	510-670-6615	56.14



(.0009% of property tax assessed value)

# Financials

# Our Staff: *17 FT & 5 Seasonal Staff*



## Mosquito Control

9 FT Staff in 8 Zones  
2 Seasonal Staff

## Monitoring

3 FT Staff  
2 Seasonal Staff

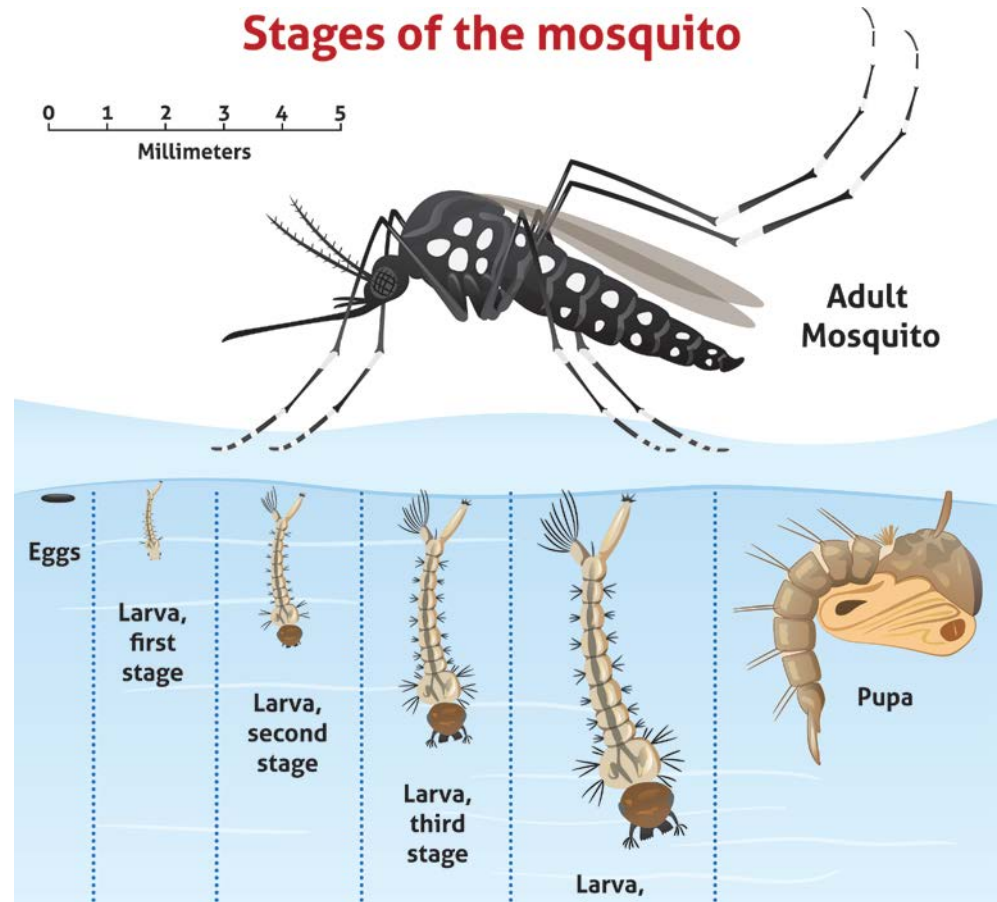
## Administrative

5 FT Staff  
1 Seasonal Staff



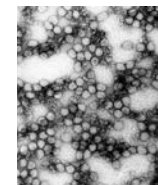
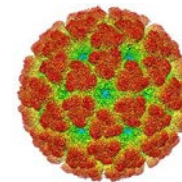
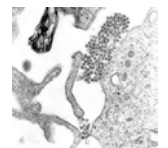
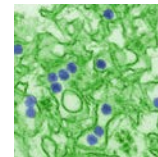
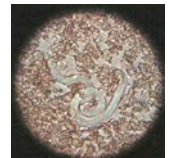
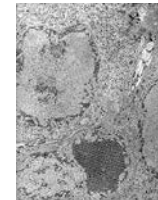
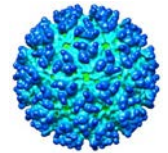
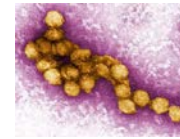
# Aquatic Lifecycle

- Urban mosquitoes spend 1 - 2 weeks as larvae or pupae
- Breathe air at the surface of water



# Mosquito Pathogens

- West Nile virus
- Western equine encephalitis virus
- Saint Louis encephalitis virus
- Dog heartworm
- Malaria
- Zika virus
- Dengue virus
- Chikungunya virus
- Yellow fever virus





# Mosquitoes in Alameda County that transmit West Nile virus



*Culex pipiens*:  
common house mosquito



*Culex tarsalis*:  
western encephalitis mosquito





# Mosquitoes that spread Zika, Dengue, Chikungunya, Yellow Fever viruses



*Aedes aegypti*

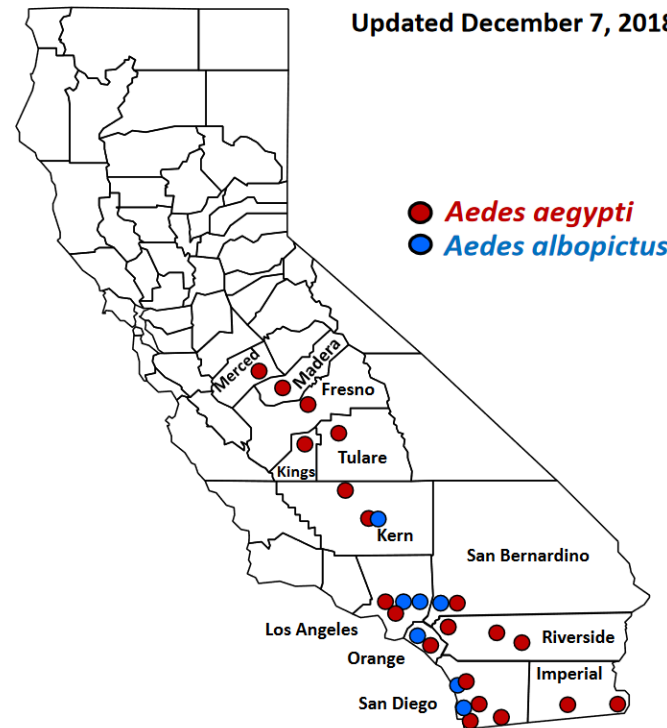
lyre-shaped pattern on thorax

*Aedes albopictus*

bright lateral line on thorax

## *Aedes aegypti* and *Aedes albopictus* Mosquitoes in California Detection Sites by County/City

Updated December 7, 2018



Counties with  
*Aedes aegypti* only:  
Fresno, Imperial, Kings,  
Madera, Riverside, Merced,  
Tulare

Both *Aedes aegypti* and  
*Aedes albopictus*:  
Kern, Los Angeles, Orange,  
San Bernardino, San Diego

See pages 2 and 3 for *Aedes*  
detections by city or census-  
designated place in each  
county.

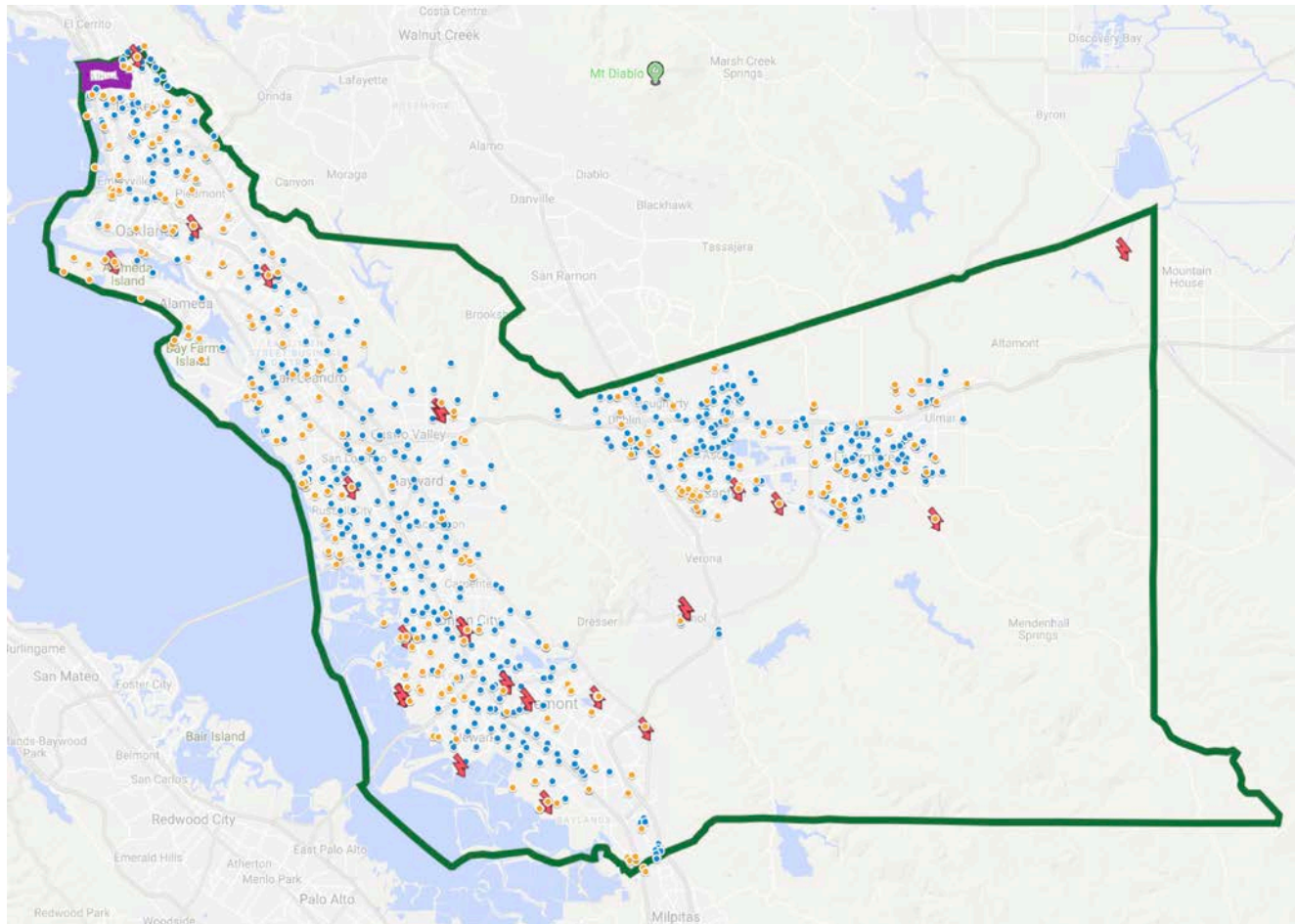


# Controlling Mosquitoes

---



# Our Service Area and Monitoring Sites



— County boundary

— Outside of service area

⚡ Light traps  
(n = 22)

● Native mosquito traps  
(n = 180)

● Invasive *Aedes* traps  
(n = 710)





# Monitoring Approach

## Looking for larvae & eggs



## Adult monitoring with traps



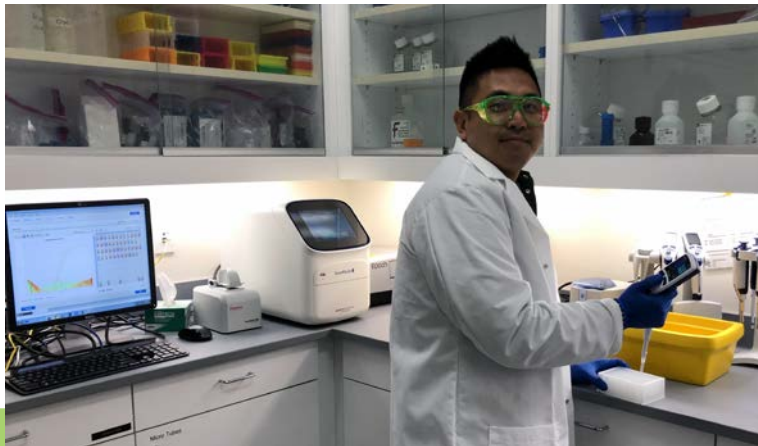


# Testing for disease and insecticide resistance

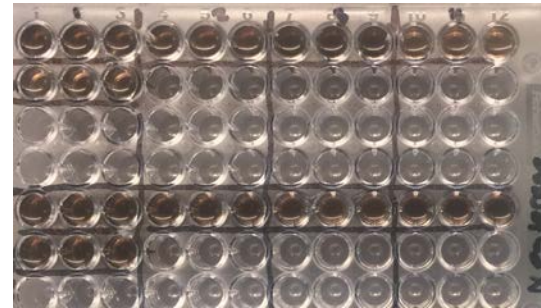
we test more than 90 % of disease-spreading mosquitoes caught in our traps



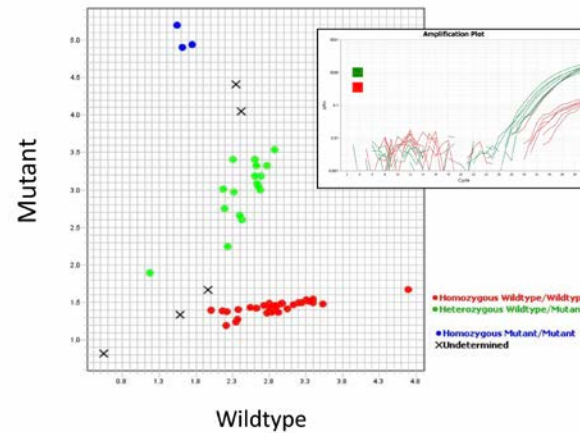
virus test results in 3 hours



sensitivity to insecticides



insecticide detoxification



genetic resistance

# Controlling mosquitoes in storm drain systems



# Controlling mosquitoes in marshes





# Controlling mosquitoes with fish





# Controlling mosquitoes through source reduction



# Channels for community outreach

## Legislative



## Interagency



## Public





[illegible]

## Threats

Financial pressures

Invasive mosquitoes

Climate change

## Opportunities

Financial planning

Emerging technologies

Interagency collaboration





# 1. Financial Planning



\$2.50 benefit  
assessment *can* be  
raised to \$7.00 for  
enhanced services



Pension stabilization-  
115 trust with PARS

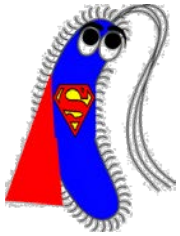


Reserve funds with  
CAMP

## 2. Innovative Control Methods



Irradiate reproductive cells



Wolbachia-infect



Modify genome using Gene Drives  
(CRISPR)



### 3. Interagency collaboration: trash capture devices/ BMPs



California Stormwater  
Quality Association



# 4. Healthy Wetlands



California Department of  
Fish and Wildlife

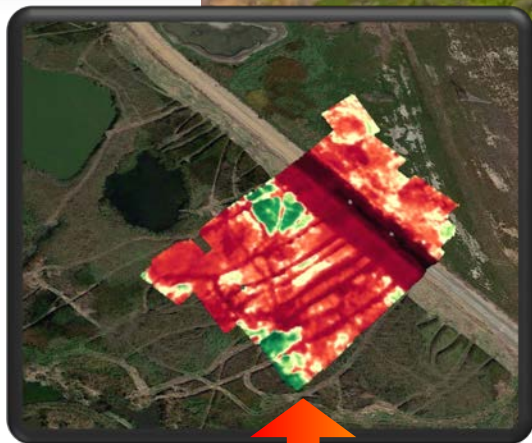


**South Bay Salt Pond  
Restoration Project**





## 5. Emerging technologies: drone imagery of marshes where mosquitoes can breed



Multispectral camera imagery of landscape



# Partnerships



San Francisco Bay Restoration Authority



**SAN MATEO COUNTY  
MOSQUITO & VECTOR  
CONTROL DISTRICT**  
Protecting public health since 1916



# Mosquito Sources in the City of Emeryville

- Catch basins, especially:  
Marketplace, Artist Co-op, Bay Street, Powell Street
- Watergate Apartment Complex tidal flooding
- Unmaintained swimming pools



CALIFORNIA  
emeryville







Thank you-

- **Ryan Clausnitzer, MPA**
- **General Manager**
- 23187 Connecticut Street
- Hayward, CA 94545
- [www.mosquitoes.org](http://www.mosquitoes.org)
- [ryan@mosquitoes.org](mailto:ryan@mosquitoes.org)
- 510-925-1756

