

RESOLUTION NO. 18-05

Resolution Of The City Council Of The City Of Emeryville Granting A Waiver From The Noise Ordinance To Arrow Sign Company On Saturday, February 3, 2018 Between The Hours Of 6:00 A.M. And 5:00 P.M. For Removal Of The Art.com Signs At 2100 Powell Street (APN: 49-1495-9)

WHEREAS, on December 18, 2017 Arrow Sign Company requested a Noise Waiver for exterior work on Saturday, February 3, 2018 between the hours of 6:00 a.m. and 5:00 p.m. for crane work to facilitate the removal of the two Art.com high-rise identification signs at 2100 Powell Street; and

WHEREAS, the request is being made to accommodate the use of a crane and truck loading that will limit pedestrian and vehicular traffic around 2100 Powell Street; and

WHEREAS, performing the work on Saturday will be safer and result in fewer traffic impacts due to fewer people being in the area on a weekend; and

WHEREAS, Chapter 13 of Title 5 of the Emeryville Municipal Code limits construction noise to 7:00 a.m. to 6:00 p.m. weekdays, but allows a developer or contractor to ask the City Council for a waiver of the construction noise restrictions; now therefore, be it

RESOLVED, that the City Council of the City of Emeryville hereby finds that the noise waiver for weekend construction work at 2100 Powell Street is exempt from the California Environmental Quality Act (CEQA) under the general rule that CEQA applies only to projects which have the potential for causing a significant effect on the environment, as stated in Section 15061(b)(3) of the State CEQA Guidelines, and in this instance it can be seen with certainty that there is no possibility that the noise waiver will cause a significant effect on the environment; and be it further

RESOLVED, that the City Council finds that the conditions set forth below provide adequate protection for nearby residents and businesses; and be it further

RESOLVED, that the City Council hereby approves the request for a waiver of construction noise hours for Saturday work at 2100 Powell Street with the following conditions:

1. Work shall be allowed on February 3, 2018 from 6:00 a.m. to 5:00 p.m. All work shall be limited to that described in the attached letter from Arrow Sign Company dated December 18, 2017, and attached hereto as Exhibit A.
2. Two signs shall be posted indicating the name and telephone number of a person to contact for concerns or complaints. This telephone must be answered by a live person during construction hours (not by voice mail or answering

machine). This person must have the authority to stop work. These signs must be clearly legible from Frontage Road.

3. The applicant shall notify all neighbors within 300 feet of the site, and the Emeryville Police, Fire and Public Works departments, prior to commencing weekend work.
4. If residents or local businesses complain, all work on the site and in the vicinity shall cease until the issue is resolved.
5. The City Council may revoke or modify this approval if the applicant fails to comply with any of these conditions of approval, or if any complaints are received and not satisfactorily resolved.

ADOPTED by the City Council of the City of Emeryville at a regular meeting held on Tuesday, January 16, 2018 by the following vote:

| | | |
|----------|----------|---------------------------------------------------------------------------------|
| AYES: | <u>5</u> | Mayor Bauters, Vice Mayor Medina and Council Members Donahue, Martinez and Patz |
| NOES: | <u>0</u> | |
| ABSTAIN: | <u>0</u> | |
| ABSENT: | <u>0</u> | |

ATTEST:



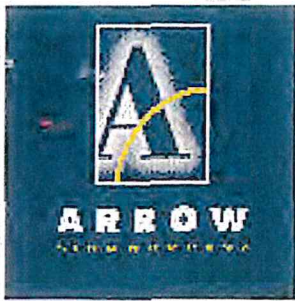
CITY CLERK


MAYOR

APPROVED AS TO FORM:



CITY ATTORNEY



Corporate Headquarters
1051 46th Ave.
Oakland, CA. 94601-4436
Phone 510.533.7693
Fax 510.533.0815

Stockton
3133 North Ad Art Road
Stockton, CA 95215
Phone 209.931.5522
Fax 209.931.5844

Memorandum

Date: 12/18/17

To: Charles S Bryant, Director of Planning and Building
1333 Park Avenue, Emeryville, CA 94608

Subject: Noise Ordinance Waiver for Construction Hours

Arrow Sign Company of Oakland has been contracted to make a removal of the existing Art.com signage located at 2100 Powell St. We are requesting a waiver for our equipment and personal to work on a Saturday during daylight hours.

There are two (2) signs on opposing elevations North and South to be removed. The North elevation sign will require an encroachment permit to partially close the right turn lane and direct this traffic temporarily around the Arrow equipment into the #1 traffic lane where they can again reenter the right turn lane before reaching the intersection. See enclosed traffic and pedestrian control plan. The South elevation sign will be removed without encroaching into the public right of way from private property.

Until confirmed by the city it is acceptable it is informally proposed that the removal be scheduled for a Saturday. The 1st available being February 3, 2018. A non-business day, Saturday was deemed by property management to have the least impact on the personal and vehicals arriving and departing the building and the nearby Garden Hotel located 100 yards to the Southwest. Hotel management is informally aware of the future work being proposed and to date has not raised any objection.

The work would begin on the North elevation sign at 6:00 A.M. by setting up the pedestrian and vehicle controls on the access road. The crane and Arrow Sign equipment would occupy the workspace beginning at 7:00 A.M. The full removal is estimated take approximately 10 hours. However, the North elevation removal will be completed in plus or minus 5 hours and the equipment and traffic controls removed from the access road on or before the noon hour. The crane and truck will then be relocated and setup for the removal of the South elevation sign. The South elevation then will take another four to five hours to remove and the site will be cleared on or before 5:00 P.M.

www.arrowsigncompany.com

State Contractors License: CA 314794, HI 24742, NV 53419,
AZ ROC274634, WA ARROWSC900NB

Exhibit A

The principal equipment on site will be a 250-ton wheeled hydraulic crane and is the main source of any construction noise from the running diesel engine. The other equipment will include a dump truck to receive the removed sign parts. The crane is used to hold the sign in place while it is detached by the crew using hand tools and working from behind the sign. The crane then lowers the sign parts to ground level for disposal. No personal will be lifted to the sign by the crane. All personal will have access from the building to detach the sign from the building support structure.

Thank You

A handwritten signature in black ink, appearing to read 'RL' with a stylized flourish at the end.

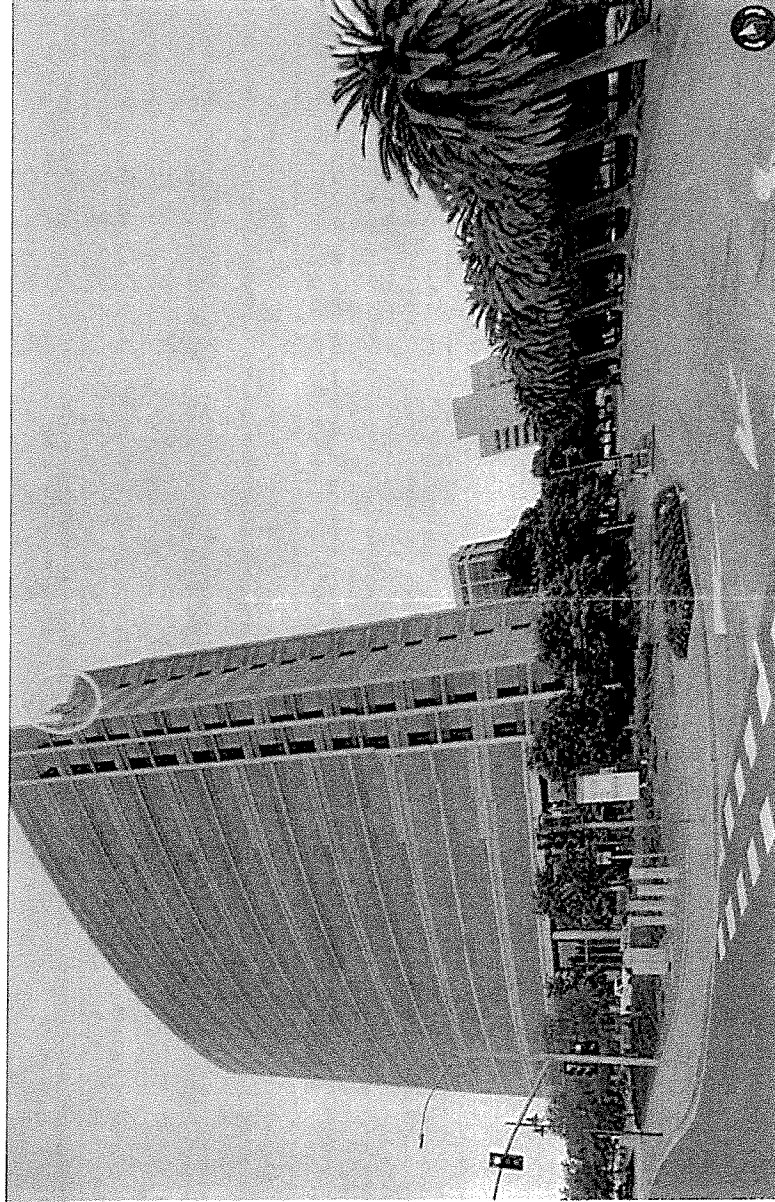
Richard Luchini
Permit Manager
Arrow Sign Company
Cell Ph. (510)-715-5488
OFC. (510)-533-7693



PHOTO SURVEY

Installing Sign Company Arrow Sign Company
1051 46th Avenue
Oakland, CA 94601
Contact Alyssa Moukhitis
Date of Survey 8/3/2017

WO# 13121
Job Name: Art.com, Removal
Address: 2100 Powell Street
Emeryville, CA 94608
Jobsite Contact: *Benjamin Hancock*
Contact Phone: *510.653.2400*



North Elevation – Remove and discard (1) set of internally illuminated Letters and Mounted frame from Existing support framing.
Building is approx. 234'6" high

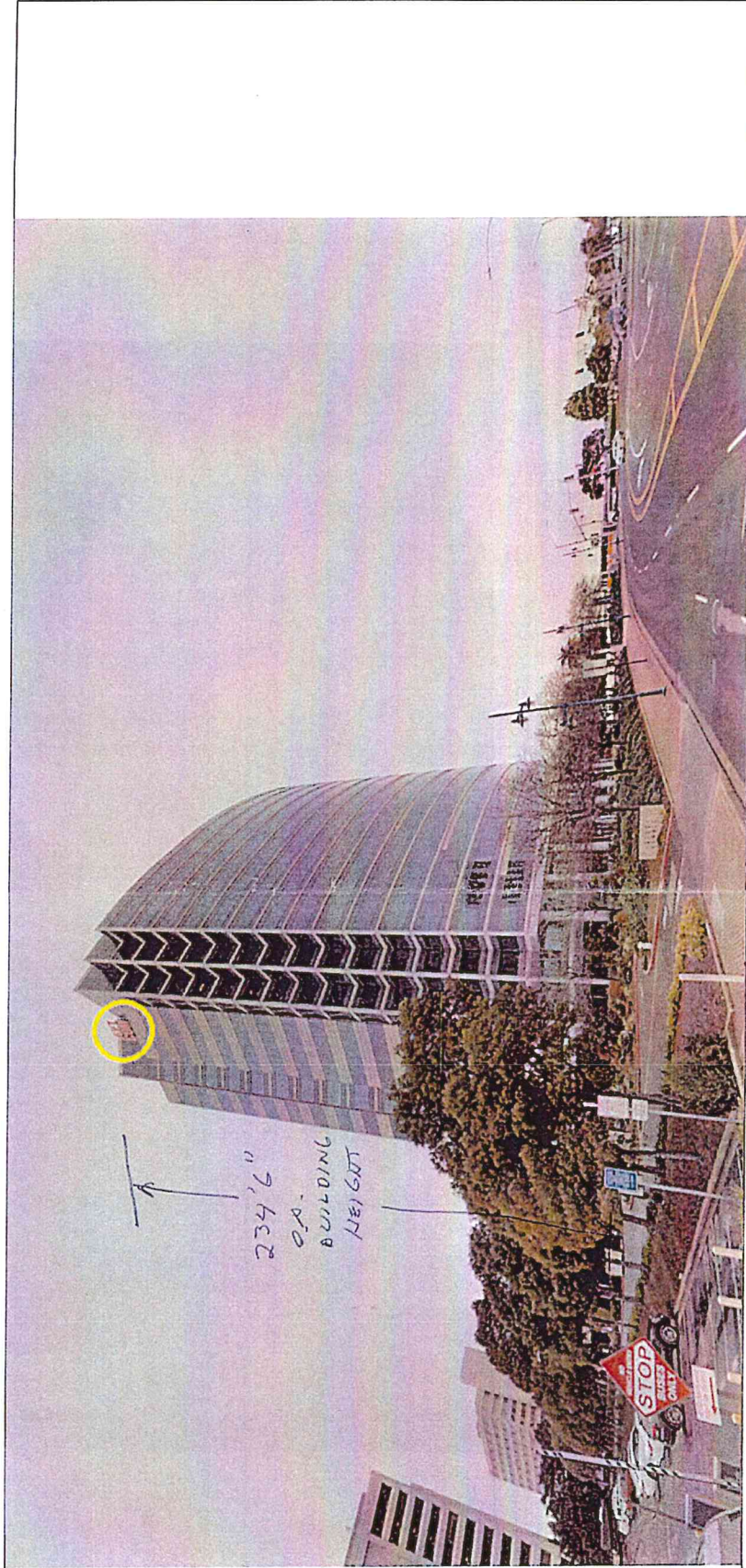
8/3/2017



PHOTO SURVEY

Installing Sign Company
Arrow Sign Company
1051 46th Avenue
Oakland, CA 94601
Contact
Alyssa Moukhlis
Date of Survey
8/3/2017

WO# 13121
Job Name: Art.com, Removal
Address: 2100 Powell Street
Emeryville, CA 94608
Jobsite Contact: ~~609.410.4104~~ HANCOCK
Contact Phone: 510.453.2422

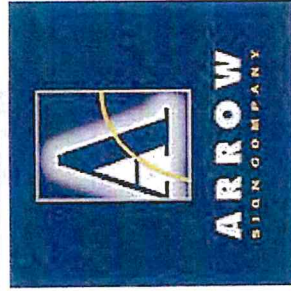


South Elevation - Remove and discard (1) set of internally illuminated Letters and Mounted frame from Existing support framing.
Building is approx. 234'6" high

A diagram illustrating a road construction setup. It features a diamond-shaped sign with the text "ROAD WORK A-HEAD". To the right of the sign is a worker standing next to a traffic cone. Dimensions are indicated: 48" for the width of the sign, 24" for the distance from the sign to the worker, and 28" for the distance from the worker to the traffic cone.

Plan Scale
1" = 77.0'

| | | | | | | | | |
|---------------------------------------------------------------------------------------|---------------------------------------------------------------------------------------|---------------------------------------------------------------------------------------|------------------------------------------|------------------------------------------------------------------------------------------------------|---------------------------------------------------------------------------------------------------------------------------------------------------------------------------------------------------------------------------------------------------------------------------------------------|------------------------------------------------------------------------------------------------------------------------------------------------------------------------------------------|--------------------------------------------------------------------------------------------------------------------------------------------------------------------------------------------------------|--------------------------------------------------------------------------------------------------------------------------------------------------------------------------------------------------------------------------------------------------------------------------------------|
|  |  |  | 1051 46th AVE. OAKLAND, CA CONTRACTOR | PLAN # 1881 DATE: 8-25-17 SHEET # 1 OF 1 JOB LOCATION: 2100 POWELL ST. EMERYVILLE, CA |  Work Area  C12(CA)  R9-11L |  CONEZ *  W1-3L |  SIGN STAND  TYPE I BARRICADE |  C30(CA)  W20-1  R9-9 |
|---------------------------------------------------------------------------------------|---------------------------------------------------------------------------------------|---------------------------------------------------------------------------------------|------------------------------------------|------------------------------------------------------------------------------------------------------|---------------------------------------------------------------------------------------------------------------------------------------------------------------------------------------------------------------------------------------------------------------------------------------------|------------------------------------------------------------------------------------------------------------------------------------------------------------------------------------------|--------------------------------------------------------------------------------------------------------------------------------------------------------------------------------------------------------|--------------------------------------------------------------------------------------------------------------------------------------------------------------------------------------------------------------------------------------------------------------------------------------|



7920 CUCAMONGA AVE,
SACRAMENTO, CA 95826
tswanson@sissi.com
916-452-4855

STATEWIDETM

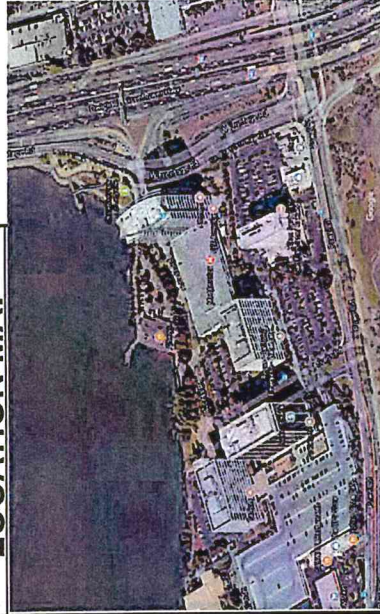
TRAFFIC SAFETY & SIGNS

Statewide Traffic Safety & Signs ("Statewide") shall not be responsible for, and [ARROW SIGN COMPANY & THE CITY OF EMERYVILLE] shall indemnify, defend and hold harmless Statewide and its agents, representatives and employees from and against, any claims, costs, damages, liabilities, expenses, demands and losses (including attorney's fees and costs and expenses) arising out of or relating to the failure of any Traffic Control Plan applicable to Statewide's work or services to comply with any local, state, or federal rule, regulation, ordinance, or statute. [ARROW SIGN COMPANY & THE CITY OF EMERYVILLE] agree that Statewide is entitled to and will rely on the written Traffic Control Plan(s) provided to Statewide by [ARROW SIGN COMPANY & THE CITY OF EMERYVILLE] and its agents, representatives and employees in the performance of Statewide's work or services.

GENERAL NOTES:

1. THIS PLAN SUPPLEMENTED WITH 2014 (CA MUTCD).
2. THE LOCATION OF THE SIGNS SHOWN ON THE PLAN(S) ARE GUIDELINES AND THE ACTUAL LOCATIONS WILL DEPEND UPON ALIGNMENT, GRADE, STREET INTERSECTIONS, AND THE 85TH PERCENTILE.
3. ONLY ONE SIDEWALK WILL BE CLOSED AT A TIME. PEDESTRIAN & DISABLED ACCESS TO BE MAINTAINED PER 2014 (CA MUTCD).
4. NO EQUIPMENT OR VEHICLES WILL BE STAGED IN BUFFER ZONES OR TRANSITION AREAS AT ANY TIME.
5. NOTIFY LOCAL LAW ENFORCEMENT, FIRE, AMBULANCE, AND TRANSPORTATION COMPANIES WITHIN 24 HRS BEFORE CONSTRUCTION BEGINS.
6. SIGNS AND CHANNELIZING DEVICES MUST BE RETRO REFLECTIVE OR ILLUMINATED DURING LOW VISIBILITY SITUATIONS (1,000' MINIMUM VISIBILITY).
7. CONTINUOUS MONITORING AND MAINTENANCE OF THE TRAFFIC CONTROL ZONE WILL BE IMPLEMENTED FOR THE PURPOSE OF MAINTAINING EMERGENCY ACCESS, PEDESTRIANS, BICYCLES, AND THE DISABLED.
8. ALL CONFLICTING MARKINGS ARE TO BE REMOVED FOR PROJECTS THAT LAST A TERM OF 3 DAYS OR LONGER.

LOCATION MAP



COMPASS





ADDRESS/ JOB

2100 POWELL ST, EMERYVILLE, CA
JOB # ART.COM

OWNER

CITY OF EMERYVILLE

DEVICE SPACING TABLE (CA MUTCD 2014)

| POSTED SPEED | FORMULA | BUFFER SPACE | MINIMUM TAPER LENGTHS | | | | | | | | | | MAXIMUM CONE SPACING | | SIGN SPACING  | LIDG (FT)  |
|--------------|-------------------------|--------------|-----------------------|-------|-------|------------|-------------|------|------------|-------|----------|-------------|----------------------|--------------|-----------------------------------------------------------------------------------------------------|--------------------------------------------------------------------------------------------------|
| | | | 10' OFFSET | | | 11' OFFSET | | | 12' OFFSET | | | | LONG | TAPER & LIDG | | |
| | | | L | 1/2 L | 1/3 L | SHOULDER | MERGE SHIFT | L | 1/2 L | 1/3 L | SHOULDER | MERGE SHIFT | | | | |
| 25 | L=WS ² 60 | 155' | 104' | 52' | 35' | 57' | 115' | 38' | 125' | 63' | 42' | 25' | 13' | 100' TO 200' | 94' | |
| 30 | | 200' | 150' | 75' | 50' | 75' | 165' | 55' | 180' | 90' | 60' | 30' | 15' | 120' TO 240' | 113' | |
| 35 | | 250' | 204' | 102' | 68' | 102' | 225' | 71' | 245' | 123' | 82' | 35' | 18' | 140' TO 280' | 131' | |
| 40 | | 305' | 267' | 133' | 89' | 133' | 293' | 98' | 320' | 160' | 107' | 40' | 20' | 160' TO 320' | 150' | |
| 45 | L=WS | 360' | 450' | 225' | 150' | 225' | 495' | 248' | 165' | 540' | 270' | 180' | 45' | 23' | 360' TO 540' | 169' |
| 50 | | 425' | 500' | 250' | 167' | 250' | 550' | 275' | 183' | 600' | 300' | 200' | 50' | 25' | 400' TO 600' | 197' |
| 55 | | 495' | 550' | 275' | 183' | 275' | 605' | 303' | 202' | 660' | 330' | 220' | 50' | 28' | 440' TO 660' | 217' |
| 60 | | 570' | 600' | 300' | 200' | 300' | 660' | 330' | 220' | 720' | 360' | 240' | 50' | 30' | 480' TO 720' | 225' |
| 65 | | 645' | 650' | 325' | 217' | 325' | 715' | 358' | 238' | 780' | 390' | 260' | 50' | 33' | 520' TO 780' | 244' |
| 70 | | 730' | 700' | 350' | 233' | 350' | 770' | 385' | 257' | 840' | 420' | 280' | 50' | 35' | 560' TO 840' | 263' |

LOW SPEED IS 40 MPH OR LESS

HIGH SPEED IS 45 MPH OR MORE

BOTH ARE BASED ON:

1. 85TH % TILE OR IF NOT AVAILABLE THEN USE

2. POSTED SPEED LIMIT

3. ANTICIPATED SPEED

L = TAPER LENGTH

S = SPEED

W = WIDTH (OFFSET FROM PATH OF TRAVEL)

RECOMMENDED ADVANCED WARNING SIGN SPACING TABLE
(SEE TABLE FOR ADDITIONAL INFORMATION)

| ROAD TYPE | A | B | C |
|----------------------------------------------|--------|--------|--------|
| URBAN (LOW SPEED) 25MPH OR LESS | 100' | 100' | 100' |
| URBAN (LOW SPEED) MORE THAN 25 MPH TO 40 MPH | 250' | 250' | 250' |
| URBAN (HIGH SPEED) MORE THAN 40 MPH | 350' | 350' | 350' |
| RURAL | 500' | 500' | 500' |
| EXPRESSWAY/FREEWAY | 1,000' | 1,500' | 2,640' |