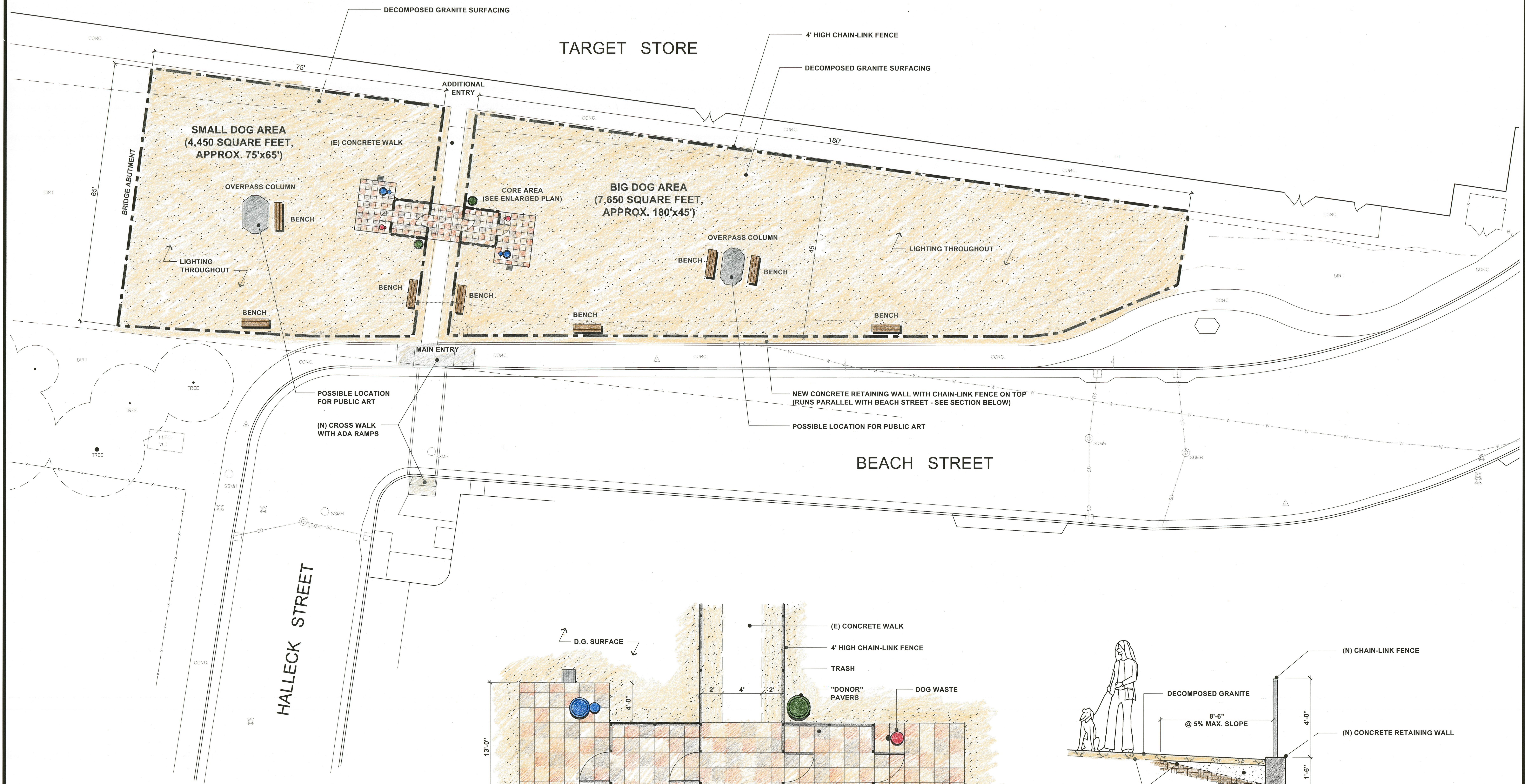


EXHIBIT A

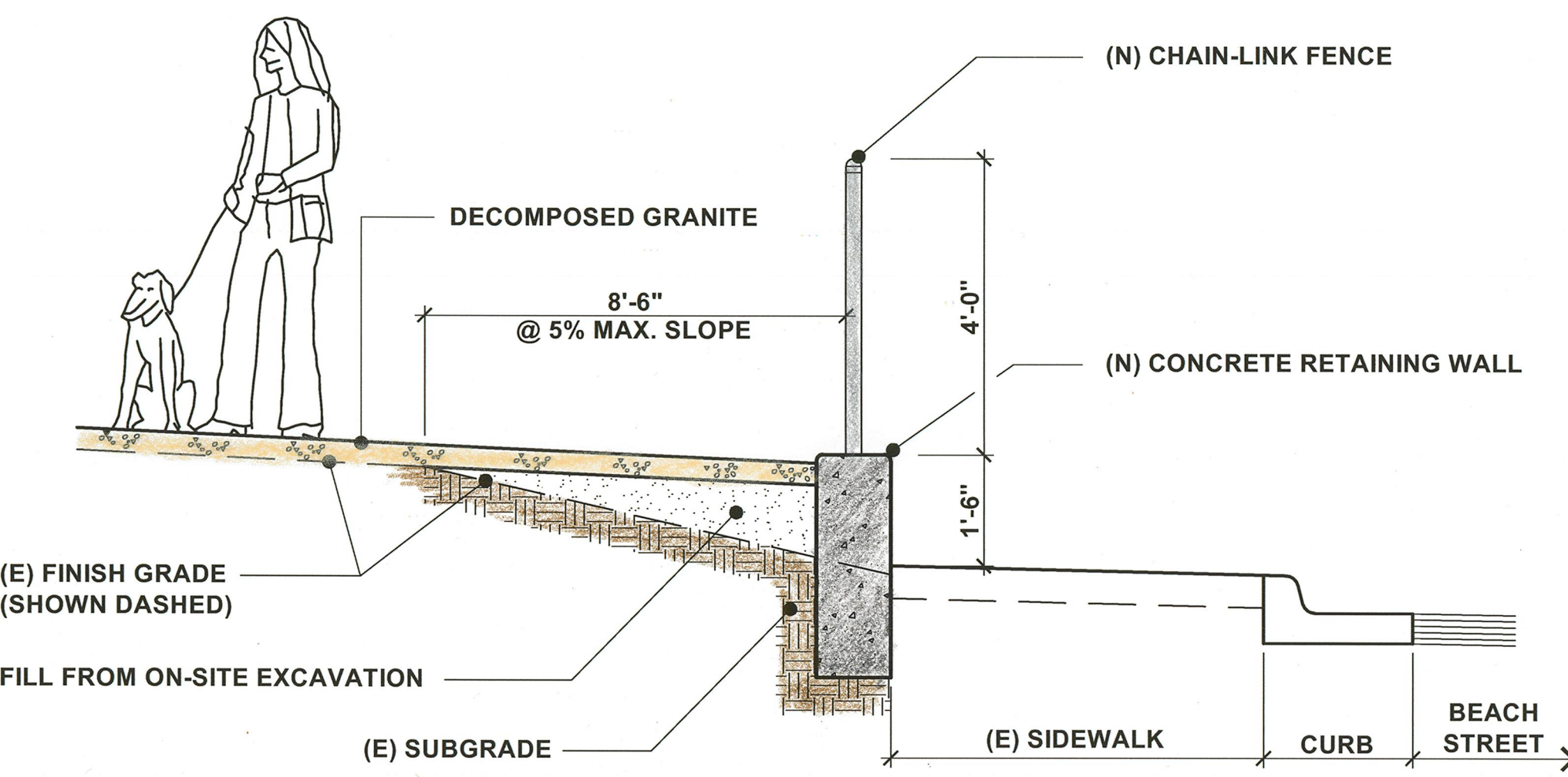
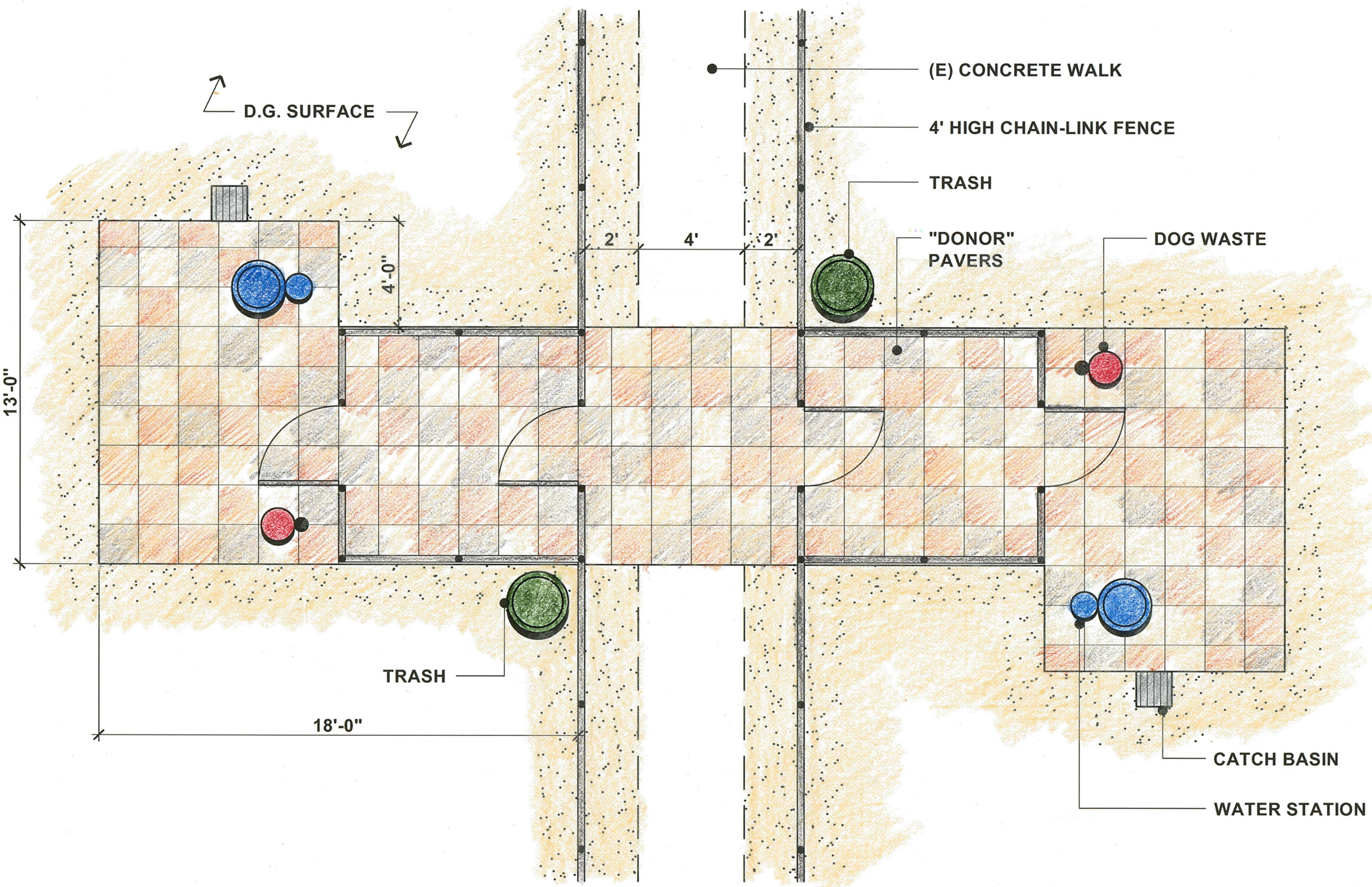


SITE FEATURES

- BIG AND SMALL DOG ENCLOSURES:** BIG DOG AREA IS 7,650 SQUARE FEET AND SMALL DOG AREA IS 4,450 SQUARE FEET - BOTH HAVE DOUBLE-ENTRY GATE SYSTEM.
- CHAIN-LINK FENCING:** THE ENTIRE DOG PARK IS ENCLOSED WITH A 4 FOOT HIGH CHAIN-LINK FENCE WITH 3 FOOT WIDE GATES. SMALL DOG AND BIG DOG AREAS ARE ALSO SEPARATED WITH FENCING.
- SURFACING:** BOTH DOG RUN AREAS ARE SURFACED WITH DECOMPOSED GRANITE WITH STABILIZER - "CALIFORNIA GOLD" FINES. THE CORE AREA IS SURFACED WITH "DONOR" PAVERS.
- SEATING:** EACH OF THE DOG RUN AREAS HAVE ADA ACCESSIBLE BENCH SEATING.
- WATER & DOG WASTE STATIONS:** A PET WATER FOUNTAIN BOWL WITH JUG FILLER AND A DOG WASTE DEPOSITORY AND TRASH CANS ARE LOCATED IN BOTH THE SMALL DOG AND BIG DOG AREAS.
- LIGHTING:** THE ENTIRE DOG PARK WILL BE FULLY ILLUMINATED.

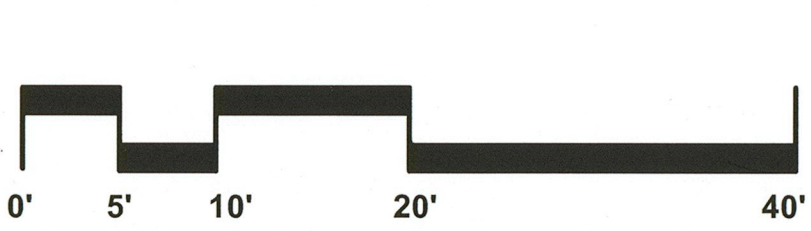
PLAN OF CORE AREA

SCALE: 1/4"=1'-0"



SECTION AT CONCRETE RETAINING WALL
(PARALLEL WITH BEACH STREET)

SCALE: 1/2"=1'-0"



REVISIONS	BY

JOHN CASHMAN
LANDSCAPE ARCHITECT
15555 Union Avenue
Suite 206 • Los Angeles, CA 90032
T 408-338-5127 • F 408-338-5113
© Reg. No. 2884

CONCEPTUAL PLAN
HALLECK & BEACH STREET DOG PARK
EMERYVILLE, CALIFORNIA

DRAWN BL
CHECKED JC
DATE 10/23/15
SCALE 1" = 10'-0"
JOB No. 15.007
SHEET 1
OF 1 SHEETS