



Table 4.1 – Recommended Speed Limit for New Surveyed Segments

#	Street	Survey Limits	Length of Roadway Segment (mi)	Existing Speed Limit (mph)	ADT	Total Collisions	Crash Rate	Statewide Average Collision Rate (2019)	Crash Rate lower than Statewide Average?	50th Percentile Speed/Mean Speed (mph)	85th Percentile Speed (mph)	10 mph Pace Speed (mph)	Percentage of Vehicles in Pace (%)	Recommended Speed Limit (mph)	Speed Limit Change Justification
1	Hollis St	67th St to Powell St	0.7	30	5,915	21	4.63	1.39	No	28.5	32.5	22-33	84.0	25	CVC Section 22358.6 (c), (d), and Section 22358.7 (2)
2	Horton St	62nd St to 40th St	0.9	25	3,303	2	0.61	1.39	Yes	23.0	27.0	18-27	85.0	20	CVC Section 22358.6 (b)and Section 22358.4 (a)(1),
3	Christie Ave	65th St to Powell St	0.5	25	4,988	12	4.39	1.39	No	22.0	26.0	17-26	75.0	20	CVC Section 22358.6 (b)and Section 22358.4 (a)(1),
4	Powell St	I-80 Frontage Rd to Vallejo St	0.6	30	39,305	43	1.67	1.18	No	30.0	36.0	27-36	81.0	30	CVC Section 22358.6 (b)
5	65th St	La Coste St to Vallejo St	0.7	25	3,833	6	2.04	1.39	No	25.0	29.0	20-29	85.0	25	CVC Section 22358.6 (c)
6	La Coste St	65th St to 64th St	0.2	25	239	0	0.00	1.39	Yes	26.0	31.0	22-31	81.0	25	CVC Section 22358.6 (b)
7	53rd St	Horton St to San Pablo Ave	0.4	25	1,959	2	2.33	1.39	No	24.0	27.0	19-28	89.0	20	CVC Section 22358.6 (b)and Section 22358.4 (a)(1),
8	Park Ave	San Pablo Ave to Halleck St	0.6	25	3,324	2	0.92	1.39	Yes	25.0	29.0	20-29	84.0	25	CVC Section 22358.6 (c)
9	Frontage Rd	Powell St to Point Emery Ln	0.6	25	4,931	6	1.85	1.39	No	29.0	32.0	23-32	80.0	25	CVC Section 22358.6 (b)

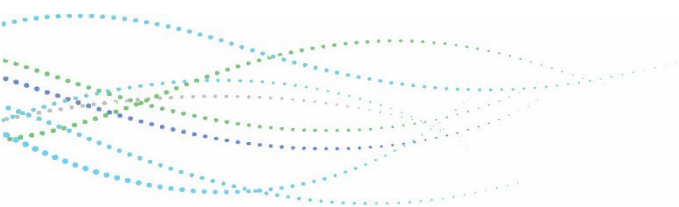
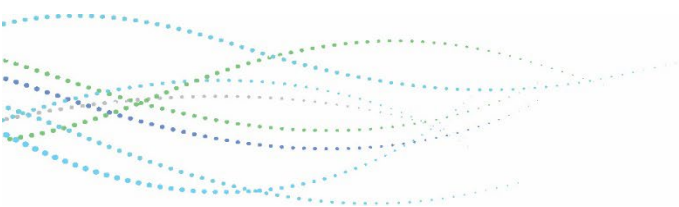




Table 4.2 – Speed Limit Recommendation for Existing Study Segments

#	Street	Survey Limits	Length of Roadway Segment (mi)	Existing Speed Limit* (mph)	ADT	Total Collisions	Crash Rate (2020-2023)	Statewide Average Collision Rate (2020)	Crash Rate (2013-2016)	Crash Rate lower than Statewide Average?	50th Percentile Speed/Mean Speed* (mph)	85th Percentile Speed* (mph)	10 mph Pace Speed* (mph)	Percentage of Vehicles in Pace* (%)	Recommended Speed Limit* (mph)
10	Hollis St	Powell St to Yerba Buena Ave	0.8	30	6,938	0	0.00	1.07	0.79	Yes	27.2	29.9	23-32	98.5	30
11	Powell St	Captain Drive to I-80 Frontage Rd	0.9	30	3,639	18	1.39	1.07	0.59	No	30.2	32.8	25-34	96.0	30
12	40th St	East abutment of 40th St Bridge to San Pablo Ave	0.6	30	17,288	13	1.14	0.64	1.22	No	32.3	35.5	29-38	92.0	30
13	Shellmound St	67th St to Christie Ave	0.7	25	6,222	12	2.52	1.07	1.48	No	25.0	27.9	22-31	94.2	25
14	Shellmound St	Christie Ave to East Abutment of 40th St Bridge	0.9	30	17,379	6	0.35	0.66	1.92	Yes	28.2	31.3	24-33	92.0	30
15	Christie Ave	Powell St to Shellmound St	0.2	25	13,694	11	3.67	1.61	2.88	No	23.0	25.4	19-28	97.0	25

Notes:  
\* Obtained from 2016 Approved ETS





# Exhibit A

per hour or less for the first 30 days that a lower speed limit is in effect as authorized by this section.

**Table 5.1** summarizes the recommended speed limit at the nine (9) new surveyed segments included in this E&TS study based on the AB 43 requirements. **Appendix D** provides a detailed analysis summary of the nine segments based on the AB 43 requirements.

**Table 5.1 – AB 43 Recommended Speed Limit for New Surveyed Segments**

#	Street	Segment Limits	Existing Speed Limit (mph)	2024 ETS Established Speed Limit (mph)	Qualification for 5-mph Speed Reduction Per AB43	Amended Recommended Speed Limit to be implemented by June 30, 2024
1	Hollis St	67th St to Powell St	30	25	No	25
2	Horton St	62nd St to 40th St	25	20	Yes	15
3	Christie Ave	65th St to Powell St	25	20	Yes	20
4	Powell St	I-80 Frontage Rd to Vallejo St	30	30	No	30
5	65th St	Hollis St to Vallejo St	25	25	Yes	20
6	65th St	La Coste St to Hollis St	25	25	Yes	25
7	La Coste St	65th St to 64th St	25	25	No	25
8	53rd St	Horton St to San Pablo Ave	25	20	Yes	15
9	Park Ave	Halleck St to San Pablo Ave	25	25	Yes	20
10	Frontage Rd	Powell St to Point Emery Ln	25	25	No	25