

Presentation on City Council Guide to Disaster Operations

PRESENTED BY FRED DAUER, POLICE DEPARTMENT



INTRODUCTION

City Council has a significant role in the City's response to disasters

Council actions influence community and city staff

CITY COUNCIL DESIGNATED AS DISASTER COUNCIL

EMERYVILLE MUNICIPAL CODE

Title 4, Chapter 2.05-2.06 of the Emeryville Municipal Code designates the City Council as the City's Disaster Council.

The Mayor is the chair of the Disaster Council, and the Vice Mayor is the vice chair of the Disaster Council.

ROLE OF DISASTER COUNCIL

- ▶ Set policy for emergency preparedness
- ▶ Review and approve emergency plans developed by staff and such ordinances and resolutions as are necessary to implement such plans and agreements

CITY MANAGER'S ROLE DURING EMERGENCIES

The City Manager:

- Has authority to proclaim an existence or threatened existence of an emergency or request the City Council to do so
- Functions as the Emergency Operations Center (EOC) Director
- Oversees all aspects of the City's response operations
- Authorized to issue and enforce rules, regulations and/or orders

PROCLAMATIONS

- ▶ **LOCAL EMERGENCY:** Incident of threat of a disaster or extreme peril to the safety of persons and property caused by natural or man-made situations.
- ▶ **STATE EMERGENCY:** Governor declares a state of emergency when conditions of disaster or extreme peril exist which threaten the safety of person or property within the State.
- ▶ **PRESIDENTIAL DECLARATION:** Governor may request a Presidential Declaration of Emergency or Disaster when the effective response to the disaster is beyond the ability of the state and the affected local jurisdiction.
- ▶ **FEDERAL DECLARATION OF EMERGENCY:** President can make a Declaration of Emergency instead of Disaster.
- ▶ **FEDERAL DECLARATION OF MAJOR DISASTER:** President determines situation warrants major federal disaster assistance.
- ▶ **DECLARATION OF HEALTH EMERGENCY:** Declared by the County Health Officer when there is a threat to public health.

City Council's Role During Emergencies

Ratify

Ratify a
Proclamation

Pass

Pass emergency
ordinances and
resolutions









Designate

Designate
alternates to help
with the
continuity of
government

Facilitate

Facilitate the
continuity of
government
following an
emergency

CITY COUNCIL'S ROLE DURING EMERGENCIES

-  Act as a conduit between the City and the public
-  Serve as a liaison with other City, County, State and/or Federal Representatives
-  Serve as the liaison with the public and/or community organizations
-  Assist in public outreach efforts
-  Conduct public meetings to determine public needs
-  Survey problem sites
-  Visit shelters
-  Host VIPS and government officials

CONTINUITY OF GOVERNMENT

IT IS CRITICAL FOR THE CITY TO
RESUME AND MAINTAIN
CONTINUITY OF GOVERNMENT
OPERATIONS.



THE ABILITY OF THE CITY
COUNCIL TO CONTINUE
OPERATIONS AS THE CITY'S
LEGISLATURE IS ESSENTIAL FOR THE
CITY TO RECOVER FROM A DISASTER

OVERVIEW OF DISASTER PREPAREDNESS

THE FIVE PHASES OF EMERGENCY MANAGEMENT



PREVENTION:
ANY ACTIVITIES,
TASKS,
PROGRAMS, AND
SYSTEMS
INTENDED TO
AVOID OR
INTERVENE IN
ORDER TO STOP
AN INCIDENT
FROM
OCCURRING



PREPAREDNESS:
ACTIVITIES THAT
ARE DONE
BEFORE A
DISASTER SUCH AS
TRAINING,
PLANNING,
COMMUNITY
EDUCATION AND
EXERCISES



MITIGATION:
PROACTIVE
EFFORTS, BOTH
LONG AND
SHORT-TERM, TO
MINIMIZE
POTENTIAL
EFFECTS OF THE
DISASTER UPON
LIFE AND
PROPERTY IN
ORDER TO CREATE
A SAFER
ENVIRONMENT
THAT WILL RESULT
IN FEWER
CASUALTIES AND
LOWER RESPONSE
COST.

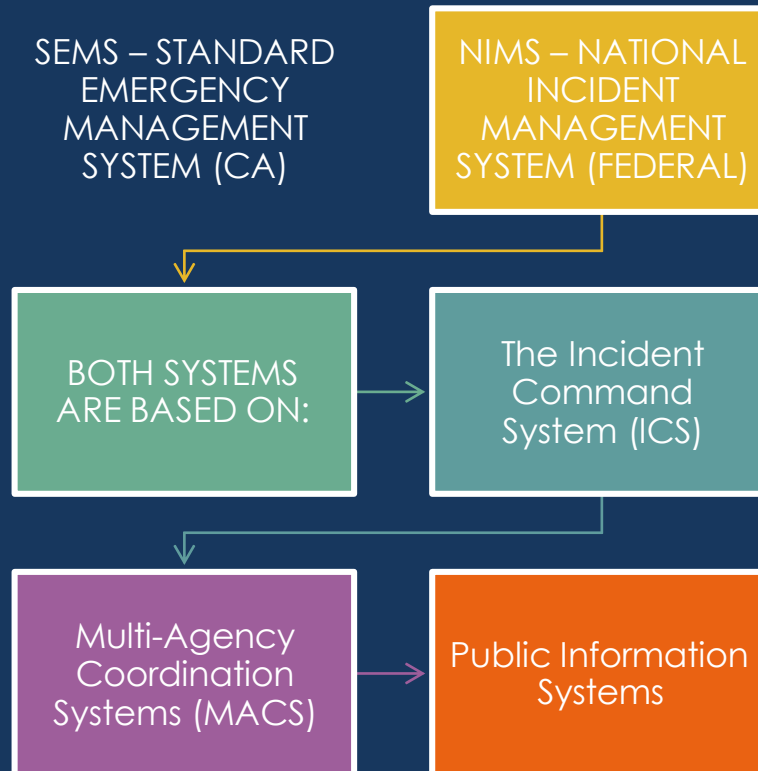


RESPONSE:
PRE-IMPACT
IMMEDIATE
IMPACT
SUSTAINED
PRIORITIES:
PRESERVE LIFE
PROTECT
PROPERTY
RESTORE ORDER
SAFEGUARD THE
ENVIRONMENT
ENSURE COST
RECOVERY



RECOVERY:
INVOLVES THE
CLEANUP AND
RESTORATION
ACTIVITIES THAT
ARE NECESSARY
TO BE ABLE TO
RESTORE THE CITY
TO PRE-EVENT
CONDITIONS OR
BETTER, IF
POSSIBLE.

EMERGENCY MANAGEMENT SYSTEMS



LEVELS OF GOVERNMENT IN SEMS

Field Level Operations: Deployment of emergency response personnel and resources

Local Government Level: City manages and coordinates overall emergency and recovery activities within its jurisdiction

Operational Area Level: The Operational Area (the County) manages or coordinates information, resources, and priorities among the local governments within the operational period

Regional Level Operations: Manages and coordinates information, and brokers resources among the Operational Area within the mutual aid region and between the Operational Area and the State Level

State: Manages and allocates state resources in response to the emergency needs of the other levels

RESPONSE LEVELS

1

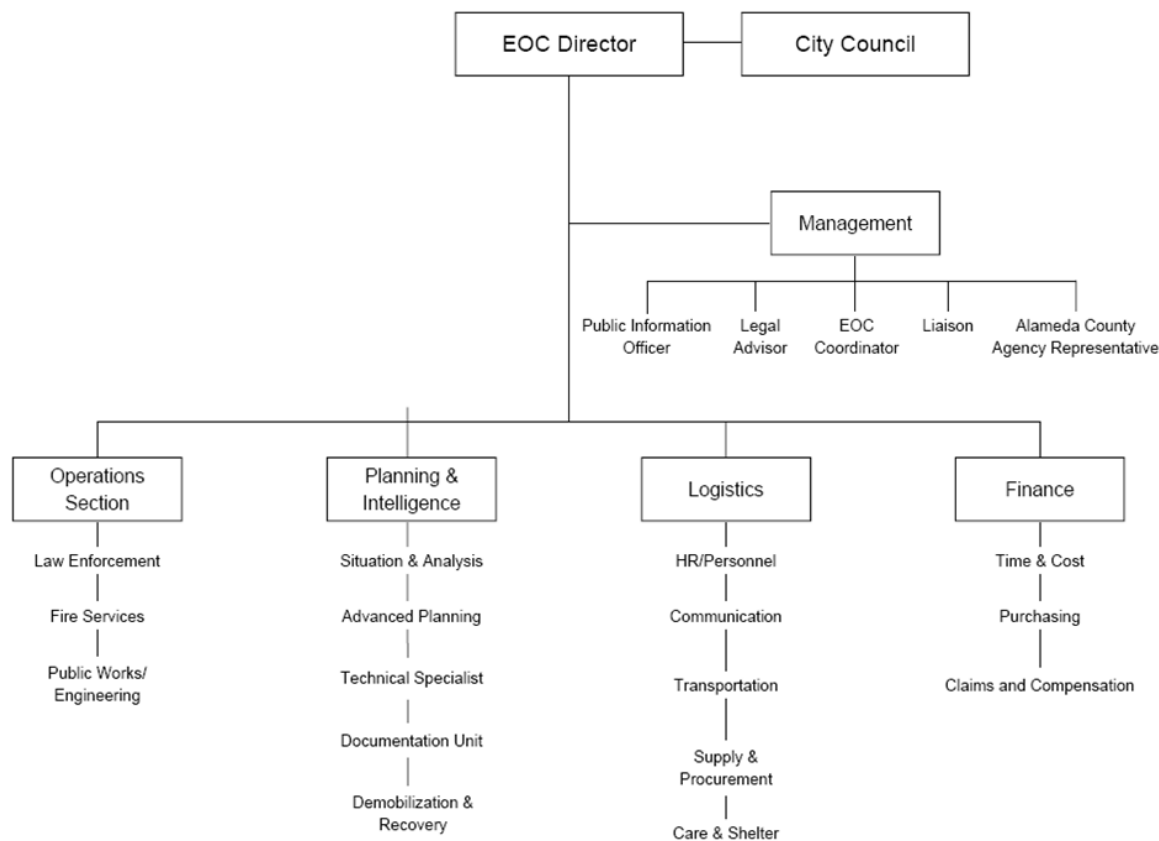
Local Emergency:
Situation is managed
in a normal manner
from a command
post at the scene

2

Local Disaster: City
resources are not
adequate and mutual
aid may be required
on a regional or even
statewide basis

3

Major Disaster: City
resources are
overwhelmed and
extensive outside
resources are
required



CITY OF EMERYVILLE EMERGENCY MANAGEMENT ORGANIZATION

Incident Command System

- ▶ Used to manage an emergency incident or a non-emergency incident
- ▶ Can be used for small and large situations
- ▶ Provides a common framework
- ▶ Establishes standard response and operational procedures
- ▶ Requires the activation of the Emergency Operations Center (EOC)

CITY OF EMERYVILLE'S EMERGENCY MANAGEMENT ORGANIZATION

- ▶ **INCIDENT COMMAND SYSTEM**
 - ▶ **COMMON TERMINOLOGY**
 - ▶ **MANAGEMENT BY OBJECTIVE**
 - ▶ **MANAGEABLE SPAN OF CONTROL**
 - ▶ **INCIDENT ACTION PLAN (IAP)**
 - ▶ **CHAIN OF COMMAND**
 - ▶ **UNITY OF COMMAND**
 - ▶ **UNIFIED COMMAND**
 - ▶ **TRANSFER OF COMMAND**

ORGANIZED AROUND SEMS AND NIMS

- ▶ **Built around five functions:**
 - ▶ Management – The Deciders
 - ▶ Operations – The Doers
 - ▶ Planning & Intelligence – The Gatherers/Thinkers
 - ▶ Logistics – The Getters
 - ▶ Finance - The Payers

CALIFORNIA STATEWIDE MULTI-AGENCY COORDINATION SYSTEM

MACS (MAC SYSTEM) IS ONE OF THE PILLARS OF SEMS

DESIGNED TO ASSIST EMERGENCY MANAGERS WITH PRIORITIZING MULTIPLE EMERGENCY INCIDENTS FOR THE ALLOCATION OF SCARCE RESOURCES

OCCURS WHEN PERSONNEL FROM DIFFERENT AGENCIES WHO HAVE LEGAL RESPONSIBILITIES TO ABATE THE EMERGENCY ARE INVOLVED IN THE RESPONSE

JOINT INFORMATION CENTER (JIC)

For large scale incidents and emergencies, a Joint Information Center (JIC) may be established to coordinate all incident related public information activities. The JIC would be the central point of contact for all news media at the scene of an incident. PIOs (Public Information Officers) from all participating agencies, including the City's PIO, could collocate at the JIC.

EMERGENCY OPERATIONS CENTER (EOC)

- ▶ Centralized location for management of the emergency response
- ▶ Standard practice in emergency management
- ▶ City Manager is Director of Emergency Services and the EOC Director
- ▶ Director and key decision-making personnel operate from the EOC establishing policy and priorities
- ▶ Central point for information gathering, processing and dissemination
- ▶ Can be partially or full activated
- ▶ City Attorney, Public Works Director, and Community Development Director appointed as standby officers for EOC Director

LEVELS OF ACTIVATION OF THE EOC



Forward Leaning (monitoring): Used for incidents that have the potential to expand rapidly in size, scope, or complexity.



Minimal Activation: Used in the early stages of an event and provide basic core functions of the EOC (Virtual).



Partial Activation: EOC is activated but only some of the positions are filled. Staff would be directed to report to the EOC.



Full Activation: The EOC is activated and all or most of the positions are filled. This would involve an all-out response effort.

RESPONDING TO AN EMERGENCY

- ▶ Recommended you do not respond in the immediate aftermath
- ▶ If you do choose to respond
 - ▶ Let the City Manager know that you are going to the scene
 - ▶ Bring your ID as not every police officer or firefighter will know you by site
 - ▶ Realize the possibility exists that you will not be allowed to enter the site for your own protection
 - ▶ Walk or park your car in a safe place away from the scene
 - ▶ Watch for hazards and pay attention to your surroundings
 - ▶ Watch where you step

WORKING WITH THE MEDIA

- ▶ City Manager or PIO will brief councilmembers on the situation
- ▶ Please confer with the City Manager or the PIO before responding to a media request for comment
- ▶ One message from the City

**YOU PLAY AN IMPORTANT ROLE IN
HELPING INSTILL CONFIDENCE IN THE
CITY'S ABILITY TO RESPOND AND
RECOVER FROM A DISASTER**

CITY COUNCIL PREPAREDNESS

- ▶ Take action ahead of time to prepare you and your family in case something unexpected should happen...
- ▶ Have a plan:
 - ▶ Know how you and your family members will receive emergency alerts/warnings;
 - ▶ Know your shelter plan;
 - ▶ Know your evacuation route; and
 - ▶ Know your communication plan
- ▶ Have supplies for your household on hand

TRAINING FOR COUNCIL MEMBERS

Online FEMA Courses:

- ▶ ICS-700 NIMS an Introduction
- ▶ IS-100 An Introduction to ICS
- ▶ IS-200 Basic ICS for Single Resources and Initial Accident Incident
- ▶ IS-800 A NRP an Introduction

FEMA recommends the following training for senior elected and appointed officials:

- ▶ G-402 Incident Command System (ICS) Overview for Executives/Senior Officials
- ▶ G-191 Incident Command System/Emergency Operations Center Interface