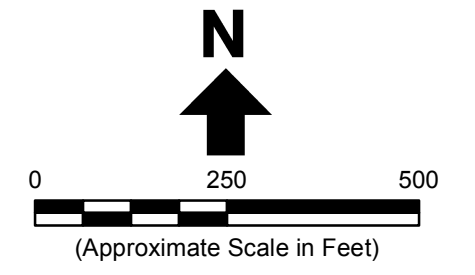
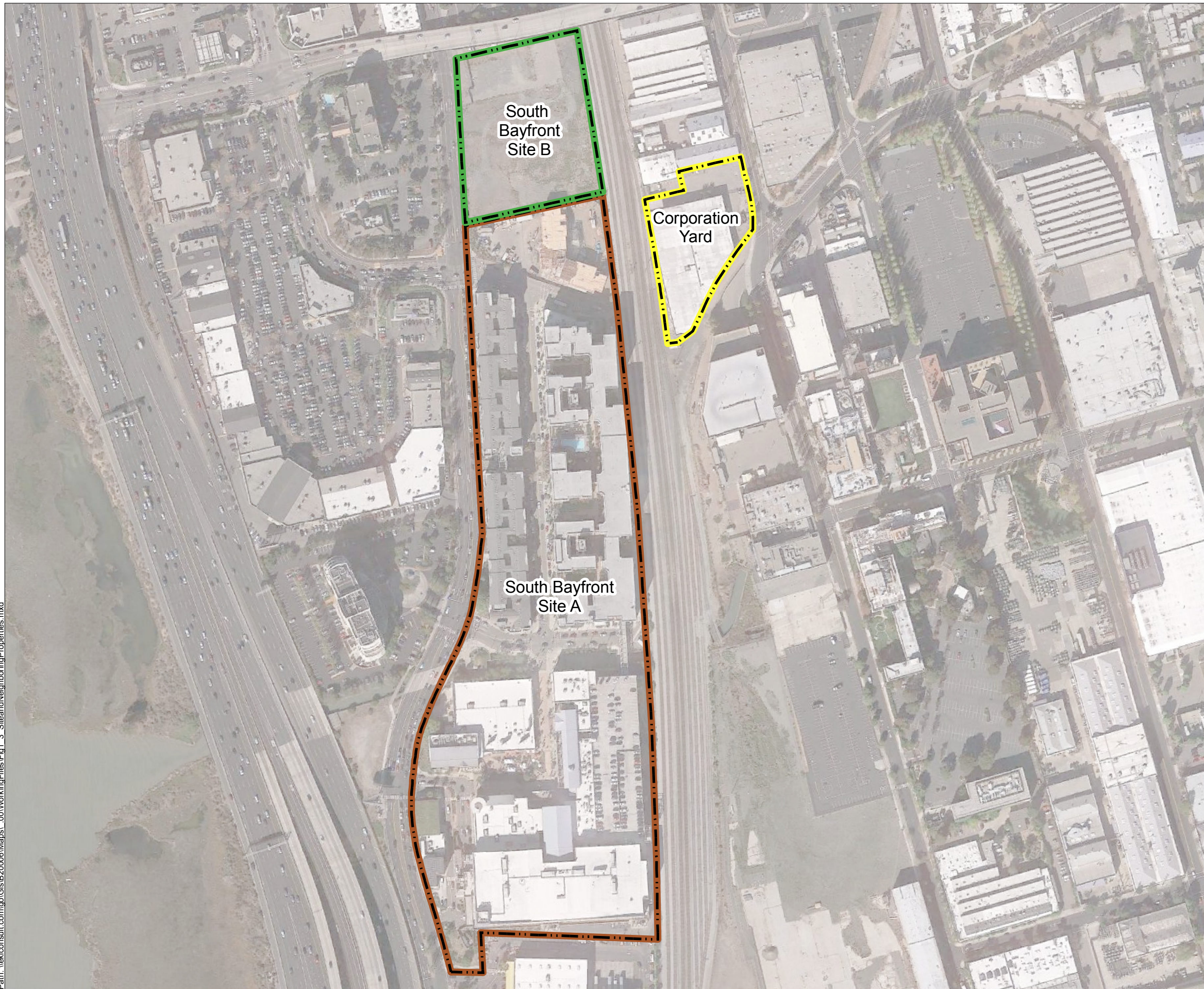


Path: \\ekiconsult.com\go\Gis\B20006\Maps\...00\WorkingFiles\Fig1_3_SiteandNeighboringProperties.mxd



- Legend**
-  Corporation Yard Property Boundary
 -  South Bayfront Site B Property Boundary
 -  South Bayfront Site A Property Boundary

Notes
 1. All property boundaries are approximate.

Source
 Google Earth Pro, Date of Imagery, October 2015.

Erler & Kalinowski, Inc.

Successor Agency Properties

Former Marchant/Whitney Site
 Emeryville, CA
 December 2018
 EKI B20006.00
 Figure 1